

mollycoddled™
baby towel wrap



Keeping **you** dry
and **baby** snug

instructions for use

1



The Mollycoddled™ Towel Wrap is designed like an apron, attaching around the waist and neck, therefore minimising the fuss and tears when it comes to the end of bath time!

It is simple and easy for mum and dad to use:

2



1. Before placing baby in the bath, attach the Mollycoddled™ towel wrap around your neck and waist.

2. When finished bathing baby lift her onto your chest. With one arm securely around baby use your other arm to wrap the towel around her.

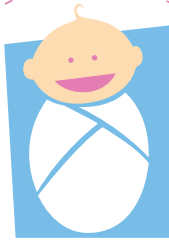
3



3. Carry baby wrapped in the Mollycoddled™ towel wrap and place on your desired secure surface. Remove towel from around your neck and waist and proceed to dry baby.

N.B. Please ensure baby is securely supported at all times.

Happy bathing from the Mollycoddled™ team!



mollycoddled™
baby towel wrap



Keeping **you dry**
and **baby snug**

questions & answers

Is the Mollycoddled™ Baby Towel Wrap machine washable?

Yes it is. We recommend that you wash before use and with the proper care it will continue to remain soft and absorbent.

What size do I need?

The towel is 98cm x 98cm therefore ensuring it will fit all shapes and sizes.

My baby is nearly 12 months old, can I still use this product?

We advise that the towel is suitable for newborns to 18 months of age, however as all children vary in size we ask that parents use their own discretion when making this decision.

For any other queries, please email Marlies at marlies@mollycoddled.com.au or call **0403 962 127**

Happy bathing from the Mollycoddled™ team!